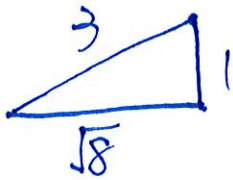


# 三角函數及反三角函數

$$\tan[\sin^{-1}\frac{1}{3}]$$

$$\text{let } \theta = \sin^{-1}\frac{1}{3} \therefore \sin\theta = \frac{1}{3}$$



$$\therefore \tan[\sin^{-1}\frac{1}{3}] = \tan\theta = \frac{1}{\sqrt{8}} = \frac{1}{2\sqrt{2}}$$