

設生產 x 磅糖果 (每日)

$$C = 300 + 1 \times x \\ = 300 + x$$

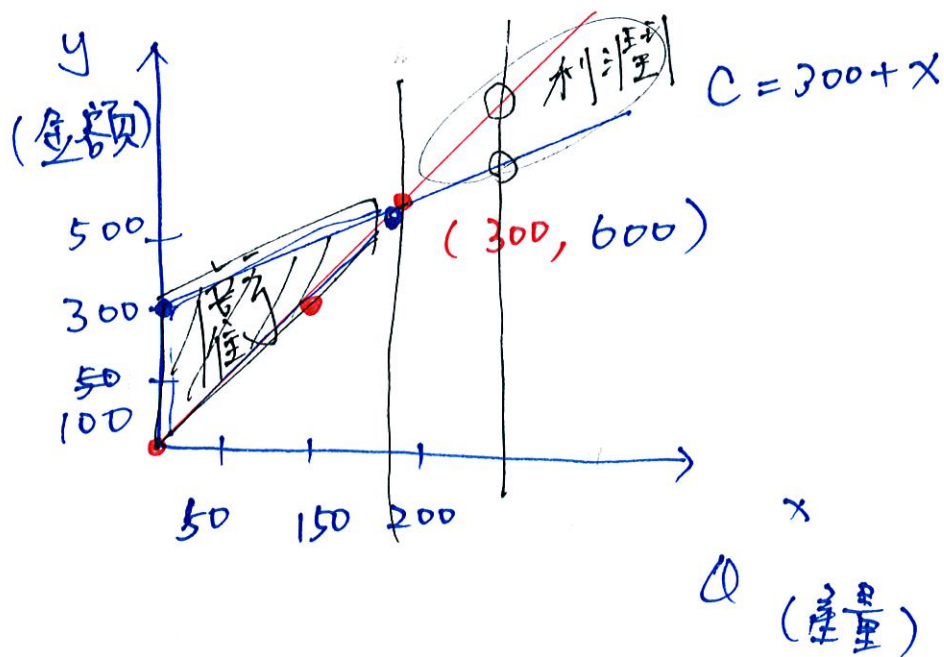
$$R = 2 \times x \\ = 2x$$

損益平衡 $\Rightarrow C = R$

$$C = R$$

$$\Rightarrow 300 + x = 2x$$

$$\Rightarrow \underline{x = 300}$$



$$C = 300 + x$$

x	0	200
y	300	500

$$R = 2x$$

x	0	150
y	0	300

$$x = 300 \text{ 代入 } R = 2x \\ C = R = 2 \times 300 \\ = 600$$